

IDEAS TO STEAL FROM FIVE COZY SEASIDE HOMES

# COASTAL LIVING<sup>®</sup>

SOAK UP THE FUN!

## HOLIDAY DEALS

at 19 top resorts

This could be your view!  
page 64

Beachy  
Gifts  
50 UNDER \$50

Party Favorites  
OUR BEST APPETIZERS EVER!  
BRUNCH IN A BREEZE  
+ THE 12 DRINKS OF CHRISTMAS

DECEMBER/JANUARY 2010

\$4.99US \$6.50CAN

12>



0 72440 10460 0

# from bali to cali

A Manhattan Beach family brings the South Pacific to Southern California with their modern take on a Balinese bungalow



GENEROUS OVERHANGS OF THE TWO CANTILEVERED ROOFS PROVIDE AMPLE SHADE TO COOL THE HOUSE

For most of his adult life, Jeff Thue, an anesthesiologist, has lived steps from the sand in the Los Angeles coastal suburb of Manhattan Beach. When he met wife Sheryl 10 years ago, she lived just two blocks from the ocean in a neighboring town. Needless to say, the Southern California natives knew they'd live near the water after they took the matrimonial plunge.

After the birth of their second child, Jeff and Sheryl felt it was time to trade in their tiny beach bungalow and build their dream home—one that would give them more room, better views, and plenty of casual indoor/outdoor living space. The spot to break ground? A hillside lot only a block from the beach on a private, pedestrian-only street. >



Architect Christopher Kempel of Rockefeller Partners Architects

Exterior siding materials like concrete, stucco, and cedar are smart choices for coastal conditions—they require no paint and little maintenance.

"WE WERE LOOKING AT IMAGES IN BOOKS  
AND MAGAZINES, AND ALL THE HOUSES  
THAT WE LOVED TENDED TO BE  
REALLY ESCAPIST-TYPE PLACES" —JEFF THUE

A "floating" cedar ceiling, accordion doors, and glass balcony walls give the living room a Bali-inspired, open-air vibe. ■ SHOP THE LOOK: Opium daybed by Christian Liaigre, Holly Hunt  
Sources: page 110

THE FUSS-FREE SINGLE BENCH CUSHION ALLOWS FOR MORE PATTERNED PILLOWS TO LIVEN UP THE ROOM

## ON THE HOUSE

**STYLE** Bali bungalow with clean, California-modern lines, loaded with eco-chic ideas

**SPACE** 3,800 square feet squeezed onto a slender 30- by 90-foot lot. Christopher emphasized height over width, with three stories that are only one or two rooms across.

**SETTING** Manhattan Beach, south of L.A., home to martini bars, chic boutiques, and plenty of Hollywood producer types, thanks to the nearby studios

**VIEW** the SoCal coastline, the Pacific, and Manhattan Beach's boardwalk, the Strand



The kitchen was an exercise in balancing cool and warm tones, with abundant natural light.



Having spent a good deal of time with her brother in Hawaii, Sheryl loves all things tropical, especially the Polynesian bungalow look—wooden fantasies that stand on stilts in the South Pacific or hover between trees in the middle of a Balinese rain forest. “We were looking at images in books and magazines,” says Jeff, “and all the houses that we loved tended to be tree houses, really escapist-type places.” Because they weren’t going to build a thatched-roof tree house in the middle of Manhattan Beach, architects Christopher Kempel and Rocky Rockefeller helped them create a modern interpretation of their Tiki hut dreams, blending contemporary style with the warm, wooden beach house vibe they were after.

The finished product, with its concrete base and soaring glass walls, is certainly modern, but it also has the feel of South Pacific buildings, thanks to the architects’ use of rich teak, mahogany, and zebrawood. To punch up the Balinese accent without getting too themey, interior designer Alana Homesley finished the look with Asia-inspired furnishings and accessories in a variety of textures, from sea-grass rugs to Thai silk throw pillows. >

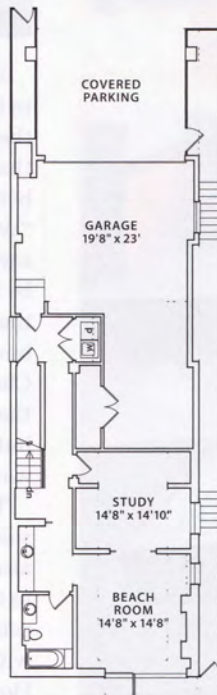


Multipurpose ground-floor rooms in Manhattan Beach homes are called “beach rooms” because they open directly to a walkway to the beach.

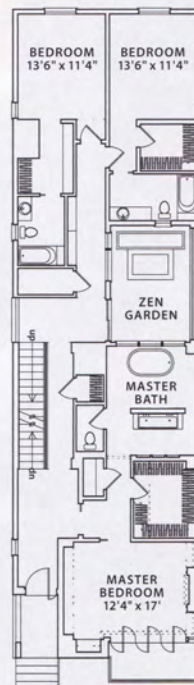
THESE OARS PROVE THAT GREAT ART DOESN'T ALWAYS BELONG IN A FRAME

## the quick tour

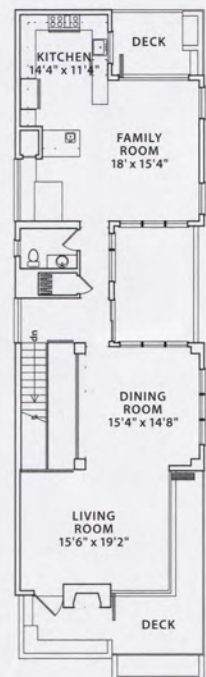
- **Facade.** With only 24 feet of building width available on the lot, the architects designed a narrow, tall house where spaces are defined by varied ceiling heights.
- **Entry.** Just outside the front door is a pedestrian lane that leads to the Strand, the town’s boardwalk. Cars are relegated to a private alleyway behind the house.
- **Zen garden.** This plot, between the master and kids’ bedrooms and accessible from the main-floor hallway, serves as a mini yard. For low maintenance, landscape architect John Feldman chose seabreeze bamboo, which tolerates wind, salt, and sun and needs little water.
- **Living spaces.** The kitchen/family room and living/dining rooms occupy the second level, guaranteeing that the areas that get the most use have the best views.
- **Bedrooms.** All three bedrooms and baths are on the main level of the house.
- **Where’s the beach?** Just outside the “beach room” doors, half a block down a pedestrian walkway. >



**LOWER LEVEL**  
(853 SQ. FT.)



**MAIN LEVEL**  
(1,674 SQ. FT.)



**SECOND LEVEL**  
(1,330 SQ. FT.)



## THE ELEMENTS: ECO-CHIC IDEAS TO STEAL

**1.** These accordion glass doors and clerestory windows usher in sea breezes, which decreases air-conditioning costs.

**2.** The platform bed and flanking nightstands are built into an alcove paneled with teak, a sustainably harvested wood.

**3.** The bathroom is warmed with radiant heat, a more efficient means of heat than baseboard or forced air, under the pebble floor.

**4.** A slatted mahogany wall brings light into the central stairwell, reducing dependency on artificial lighting. 🌿