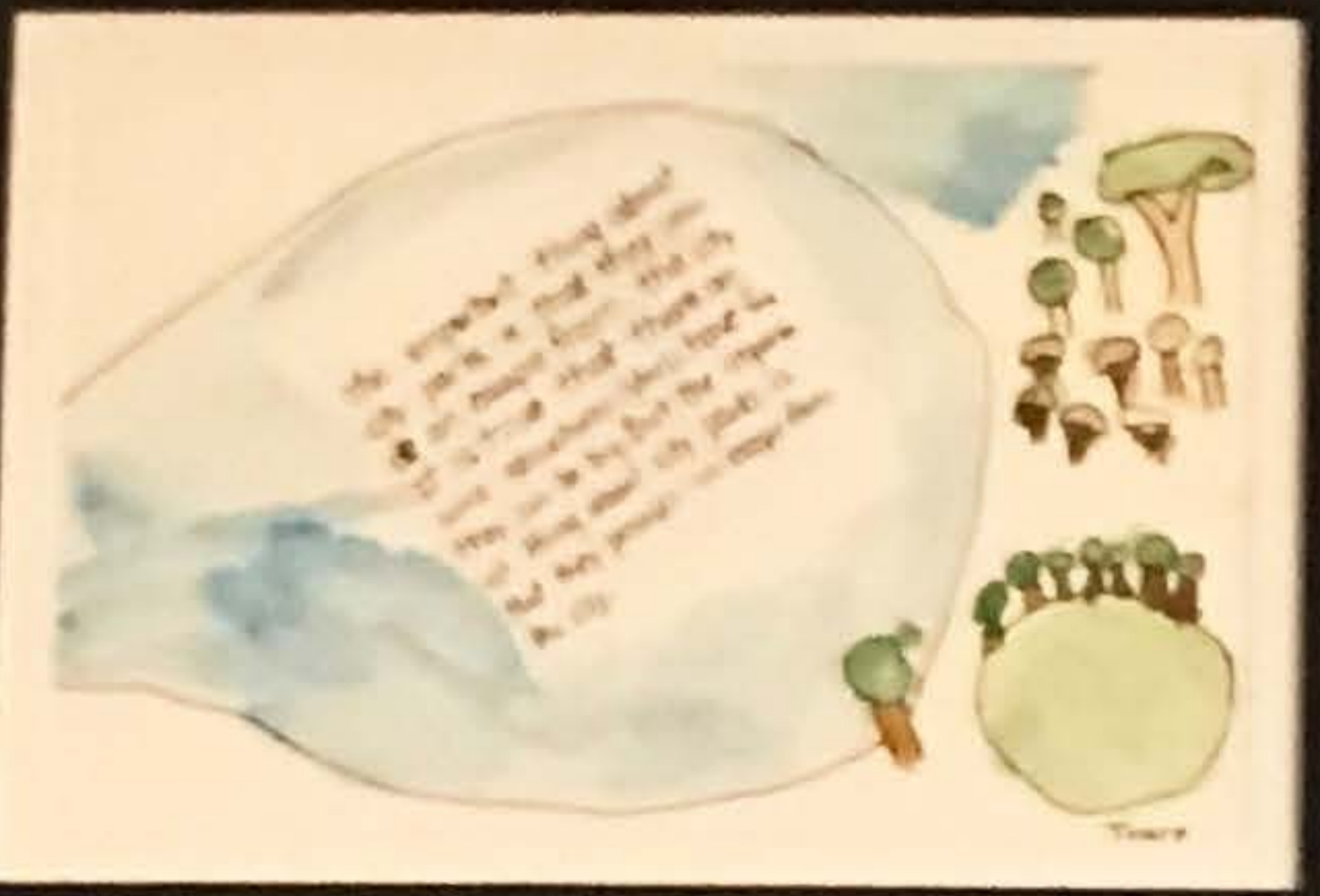


DESIGN BUREAU



SPECIAL EDITION



INSPIRING INTERIORS

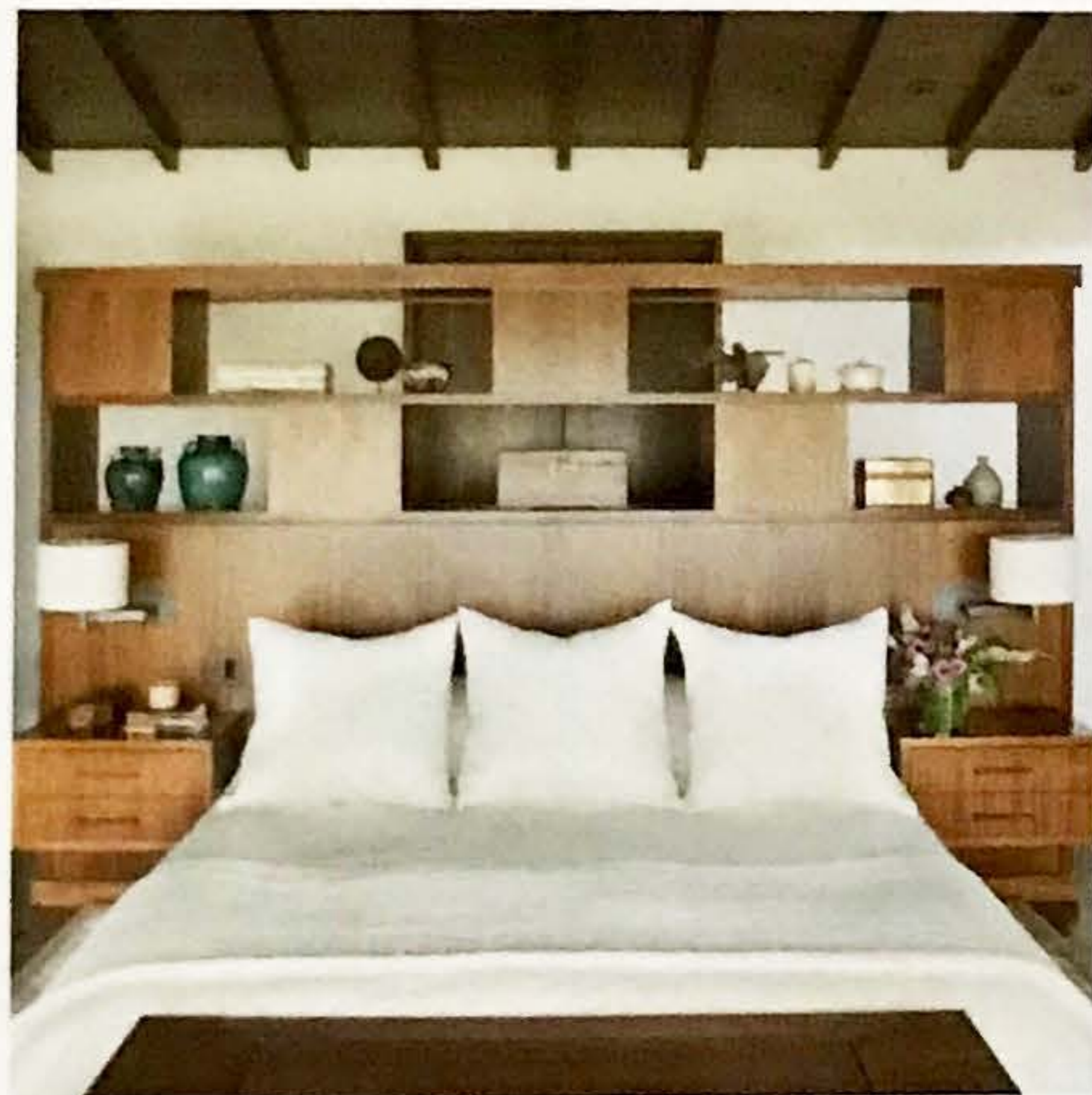


//////////
A COLLECTION OF THE BEST
INTERIOR DESIGN AROUND THE WORLD—
WHERE YOU LIVE, WHERE YOU WORK,
WHERE YOU PLAY
//////////



INSIDE OUT

A DESIGNER'S ARCHITECTURE
BACKGROUND HELPS HER CONNECT
A HOME'S INTERIORS TO THE OUTDOORS



DESIGN SUPPORT, INC.

California-based custom cabinetry company Design Support, Inc. worked with Homesley on this project and a number of others, including her own home. Owner Bruce Moler believes that working with the best has made Design Support the best at what they do. "The designers we work with are always looking for unique looks, so our materials library is very deep," Moler says.



It was an offer that would be really, really hard to refuse.

A family with four young children had been living in their Manhattan Beach dream home for about a year when they received a surprise bid to buy it—one that would double their investment in the property. Would they be able to sell?

It would come as a surprise to Alana Homesley, the Los Angeles-based designer who worked with them on the home's covetable interiors. "My client was my biggest inspiration on this job," says Homesley. "I worked mostly with the wife. She had a great narrative that she gave to the architect [Grant Kirkpatrick of KAA Design Group] and myself. It had a lot of buzz words for what she envisioned the house to be. 'Bohemian' was on the list. In the end, I don't think I gave her bohemian. I gave her casual with organic touches, but probably not bohemian."

Part of that organic—but well coordinated—feeling throughout the home comes in the interaction between Homesley's interiors and architecture that always encourages you to get outside. "In Southern California design, it is common to have a strong connection with the outdoors," says Homesley, who worked for several architecture firms before founding her

eponymous design firm. "The architect used large sliding door systems on the rooms facing the pool and yard, so the house really opens up to the exterior."

Her interiors follow the lead. Interior stone floors travel over the thresholds of the doors and are used outside to blur the line between the interior and exterior. For the extensive millwork (all designed by Homesley), she used rift-cut walnut in the kitchen, dark-stained Douglas fir for the ceilings, and mahogany-stained windows and doors. The ground level floors are walnut travertine stone.

So after four years designing and building the perfect space with Kirkpatrick and Homesley, the owners' big question suddenly and inescapably arose: To sell, or not to sell? Eventually, Homesley says, her clients made the tough decision to sell. But that's where the fun begins again. "They're currently looking for a lot on which they plan on building their next dream home," Homesley says.

"On their next project, I will strive for bohemian." ■